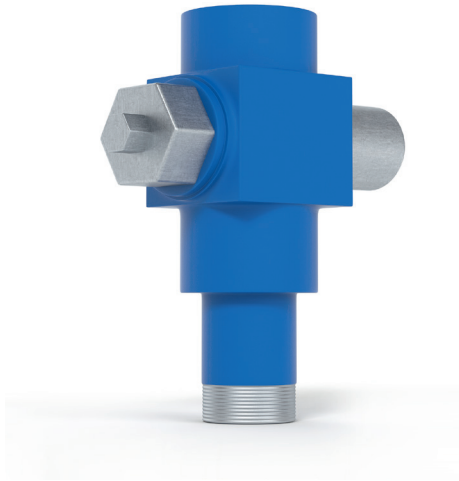


PLUG-TYPE VALVE



Purpose

Plug-type valve is designed for closing ducts and piping arrangement.

Technical features

Operating pressure, psi		3.046
Nominal inside diameter, in.		1.97
Operating medium		process water, cement mortar
Connecting thread		tubing 60 GOST 633-80
Overall dimensions, in.	length	7.87
	width	3.94
	height	9.05
Operating medium temperature, °F, NOV		+122
Weight, lb		27.56

ANGLE VALVE VU 140×50



Purpose

Angle valve is designed for closing the passages of oil and water pipelines.

Technical features

Operating pressure, psi		0.55
Nominal inside diameter, in.		1.97
Operating medium		Service water, oil, petroleum products
Connecting thread		tubing 60 GOST 633-80
Leakage class of the shutter		A as per GOST 9544-93
Overall dimensions, in.	length	14.57
	width	10.63
Operating medium temperature, °F, NOV		+212
Weight, lb, NOV		33.07