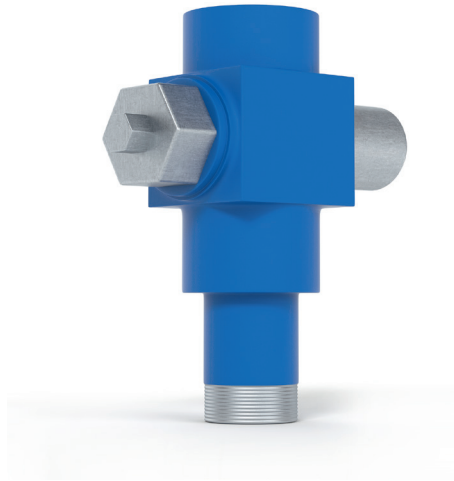


## PLUG-TYPE VALVE



### Purpose

Plug-type valve is designed for closing ducts and piping arrangement.

### Technical features

Operating pressure, psi		3.046
Nominal inside diameter, in.		1.97
Operating medium		process water, cement mortar
Connecting thread		tubing 60 GOST 633-80
Overall dimensions, in.	length	7.87
	width	3.94
	height	9.05
Operating medium temperature, °F, NOV		+122
Weight, lb		27.56

## ANGLE VALVE VU 140×50



### Purpose

Angle valve is designed for closing the passages of oil and water pipelines.

### Technical features

Operating pressure, psi		0.55
Nominal inside diameter, in.		1.97
Operating medium		Service water, oil, petroleum products
Connecting thread		tubing 60 GOST 633-80
Leakage class of the shutter		A as per GOST 9544-93
Overall dimensions, in.	length	14.57
	width	10.63
Operating medium temperature, °F, NOV		+212
Weight, lb, NOV		33.07