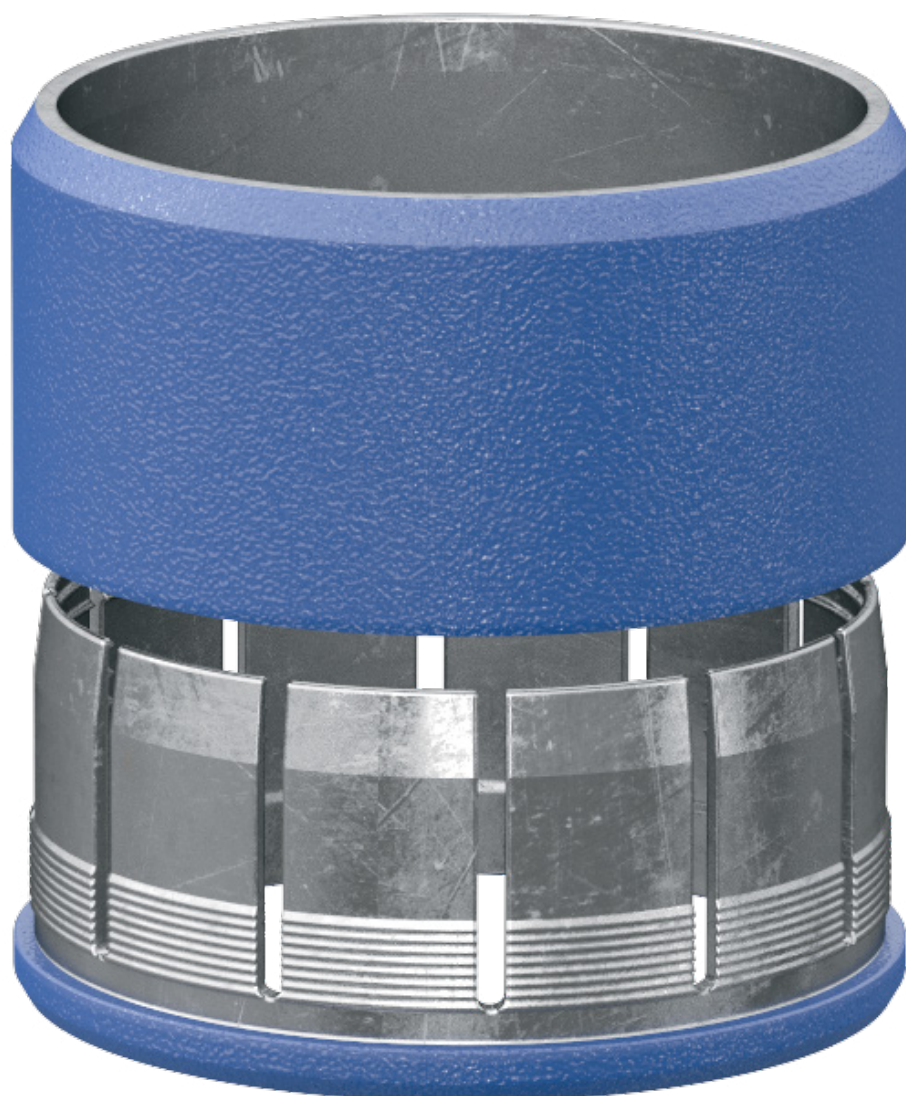


TAGRAS Oilfield Services Holding



Locking ring



8-800-250-79-39
tmcg@tmcg.ru
www.tms.tagras.ru/en



Purpose

The ring is designed to securely fix and prevent axial movement of the casing tooling along the casing body

Description

The ring is used in vertical and inclined wellbores or wellbores with horizontal ends

Technical Description

The locking ring consists of:

A **collet**, which is a split sleeve with blades that can be deflected inward. Outer surfaces of the blades have teeth that securely engage with ones of the ring;

Rings which is made of special hardened steel. Conical surface and teeth on the inside securely engage with the ones of the collet

Installation of the locking ring is carried out on the drilling rig walkways. The collet and the ring are mounted on the casing. The ring is put on the collet with a certain force until the teeth are engaged. The tapered surface of the ring compresses the collet blades, thereby ensuring a secure engagement

Ring installation on the collet is carried out with a special hydraulic device (wrench), which allows you to smoothly install the ring with the necessary torque

Specifications

Standard size	Drift diameter, in	Outer diameter, in	Length, in	Set installation time, min., NOV	Installation/ stripping force, kipf	Weight, lb
114	4.5	5.07	2.9	3	up to 6.74/ up to 9.44	2.65

Advantages

- Simplicity of design and installation
- This device shear force is 1.2 times higher than the one recommended by international standard ISO 10427-2:2004
- Hardware reliable attachment to the casing pipe body guarantees its bringing to the design depth